

Fungi Quiz

1. How many species of wild fungi are there in Britain (to nearest thousand)?
15,000
2. Perhaps the most famous use for a fungus was discovered by Scottish bacteriologist Alexander Fleming. He noticed the green mold *Penicillium notatum* growing in a culture dish of *Staphylococcus* bacteria. Around the spot of mold was a clear ring in which no bacteria grew. Fleming successfully isolated the substance from the mold that inhibited the growth of bacteria. In which year did he publish his report announcing the discovery of penicillin, the first antibiotic?
1929
3. Name this bracket fungus which grows on dead wood:



Hint: Florists sometimes use it in bouquets; it was once popular as a table or hat decoration.

Turkey Tail (*Trametes versicolor*)

4. Which iconic 'toadstool' causes hallucinations and sickness in humans; and was traditionally mixed with milk to kill flies in the house?
Fly Agaric
5. True or False? Slime molds are a type of fungus.
False
6. Which fungus matures on grain, and attacks the central nervous system, causing an illness known in the middle ages as 'St. Anthony's Fire'?
Ergot

7. Which deadly mushroom has caused the most fatalities in the UK?
Death Cap (*Amanita phalloides*)
8. Which common edible fungus, often found low on the trunks of Oak trees, has a marbled texture a bit like meat and drips red fluid that can easily be mistaken for blood.
Beefsteak Fungus
9. According to the Guinness book of records, what is the most expensive EDIBLE mushroom in the world?
White Truffle (\$3000 per KG)
10. Which other type of fungus from the Himalayas kills Ghost Moth Caterpillars and fetches up to \$20,000 per KG, when sold as a traditional chinese medicine?
***Cordyceps sinensis* (caterpillar fungus)**
11. One UK mushroom attracts flies with its pungent rotting flesh scent and was considered so indecent by the Victorians, that they hunted them down and either destroyed them with cudgels or burnt them “in the deepest secrecy on the drawing-room fire, with the door locked; because of the morals of the maids.” What is the name of this mushroom?



Stinkhorn (*Phallus impudicus*)

12. What is the correct term for a scientist who studies fungi?
Mycologist
13. What is special about Foxfire fungus?
It glows!
14. Which of these is NOT a type of fungus?
- | | | |
|---------|----------------|-----------|
| Yeasts | Molds | Rusts |
| Mildews | Lichens | Mushrooms |
15. What does fungus mean in latin?
Mushroom

Use the code key to decipher the names of British Fungi

0	1	2	3	4	5	6	7	8	9	10	11	12	13	14	15	16	17	18	19	20	21	22	23	24	25
G	A	S	U	V	Z	B	L	Q	N	K	J	C	Y	R	D	H	O	X	M	I	P	W	E	F	T

6 14 23 23 9 / 2 10 20 9 16 23 1 15

Green Skinhead

3 9 23 18 21 23 12 25 23 15 / 1 19 1 9 20 25 1

Unexpected Amanita

6 23 1 14 15 23 15 / 24 20 23 7 15 12 1 21

Bearded Fieldcap

25 22 20 2 25 23 15 / 14 23 12 23 20 4 23 14

Twisted Deceiver

15 23 22 15 14 17 21 / 15 1 21 21 23 14 7 20 9 0

Dewdrop Dapperling

25 16 23 / 21 14 23 25 23 9 15 23 14

The Pretender

2 25 20 9 10 13 / 2 8 3 20 15

Stinky Squid

12 17 22 21 1 25 / 0 23 19

Cowpat Gem



21 3 14 21 7 23 / 11 23 7 7 13 15 20 2 12

Purple Jellydisc

13 23 7 7 3 14 / 19 1 2 12 1 14 1 / 15 20 2 12 3

Yellow Mascara Disco

6 17 0 / 2 16 1 15 17 22

Bog Shadow

Real or Fake?

Fungi have some weird and wonderful names. Half of the names below are real species of fungi, the other half are made up. Can you guess which is which?

FAKE

Weasel's Teapot
Brown Shagpile
Buttered Crumpet
Miner's Kneecap
False Loaf
Hairy Flatcap
Shaggy Dog Tail
Milk of Edna

REAL

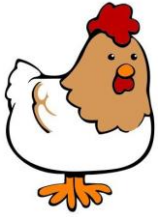
Hairy Nuts Disco (*Lanzia echinophila*)
Darwin's Golfball (*Cyttaria darwinii*)
Redleg Jellybaby (*Cudonia circinans*)
Terracotta Hedgehog (*Hydnum rufescens*)
Elbowpatch Crust (*Fomitiporia punctata*)
Ascot Hat (*Boletus bubalinus*)
Green Gillgobbler (*Hypomyces viridis*)
Silky Piggyback (*Asterophora parasitica*)



North West Kent
COUNTRYSIDE
protect / explore / enjoy

Edible Fungi (UK)

Say what you see to work out the traditional names of eight edible British fungi



Chicken of the
woods (Sulphur
Polypore)



+ E



Penny Bun (cep)



Jew's Ear (Jelly
Ear)

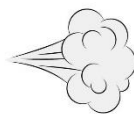
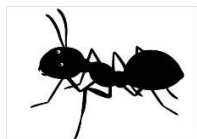
P +



Horn of Plenty
(Black
Chanterelle)



G



Giant Puffball



North West Kent
COUNTRYSIDE
protect / explore / enjoy

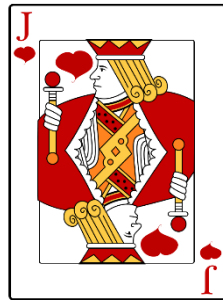


Wood Blewit

V

L

Morel



Slippery Jack